

DESIGNED	DRAWN	CHECKED
NH	NH	JY

EGRESS LEGEND

- 105' - 6" TRAVEL DISTANCE
EGRESS PATH OF TRAVEL
COMMON PATH DISTANCE
105' - 6" COMMON PATH OF TRAVEL
- LED EXIT SIGN WITH BATTERY PACK, WALL MOUNT
LED EXIT SIGN WITH BATTERY PACK, CEILING MOUNT
EXIT SIGN DIRECTIONAL ARROWS
EXIT SIGN LIGHT DIRECTION
- FEC SURFACE MOUNTED TYPE ABC FIRE EXTINGUISHER & CABINET EXTINGUISHERS SHALL BE CURRENTLY DATED AND TAGGED BY LICENSED FIRE EQUIPMENT COMPANY, AND LOCATED NOT FURTHER THAN 75 FEET OF TRAVEL DISTANCE TO AN EXTINGUISHER
- FE SURFACE MOUNTED TYPE ABC FIRE EXTINGUISHER INSTALLED ON SUPPLIED BRACKET. EXTINGUISHERS SHALL BE CURRENTLY DATED AND TAGGED BY LICENSED FIRE EQUIPMENT COMPANY, AND LOCATED NOT FURTHER THAN 75 FEET OF TRAVEL DISTANCE TO AN EXTINGUISHER

EGRESS NOTES

- COORDINATE FIRE ALARM DEVICES AND PANELS WITH ELECTRICAL DRAWINGS
- REFER TO FIRE PROTECTION DRAWINGS FOR SPRINKLER HEAD LOCATIONS
- REFER TO ELECTRICAL DRAWINGS FOR FIRE ALARM DEVICE LOCATIONS
- REFER TO ELECTRICAL DRAWINGS FOR EMERGENCY LIGHT LOCATIONS
- ORDINARY HAZARD OF CONTENTS (NFPA 38.1.5.1)
- A FACTOR OF 0.2 INCHES OF WIDTH PER OCCUPANT HAS BEEN USED TO CALCULATE MINIMUM DOOR AND CORRIDOR EGRESS CAPACITY
- A FACTOR OF 3 INCHES OF WIDTH PER OCCUPANT HAS BEEN USED TO CALCULATE MINIMUM CLEAR WIDTH OF STAIRWAY EGRESS CAPACITY

AUTOMATIC EXTERNAL DEFIBRILLATORS (AED) AND STOP THE BLEED KITS (SBK) SHALL BE INSTALLED AS DEFINED IN NFPA 101, LIFE SAFETY CODE, ON EVERY OTHER FLOOR BEGINNING ON THE FIRST FLOOR. THE AED AND SBK SHALL BE PLACED NEAR THE ELEVATOR(S) BEGINNING IN THE FIRST-FLOOR LOBBY (FIRST FLOOR, THIRD FLOOR, FIFTH FLOOR, ETC.) REFER TO BROWARD FIRE CODE AMENDMENTS SECTION F-121 FOR ADDITIONAL INFORMATION FOR LOCATION, MOUNTING, INVENTORY, TRAINING, AND INSPECTION OF REQUIRED EQUIPMENT.

GENERAL FLOORPLAN NOTES

- ALL PARKING SPACES WILL BE DOUBLE STRIPED PER (155.5102.C.4)

FOURTH LEVEL PARKING

31 DBL LIFTS (62 STANDARD SPACES)
3 DBL LIFTS (6 COMPACT SPACES)
10 STANDARD SPACES

78 SPACES TOTAL

R E V I S I O N S

DATE: 04.05.2024 COMM: 23008

POMPAÑO HOTEL

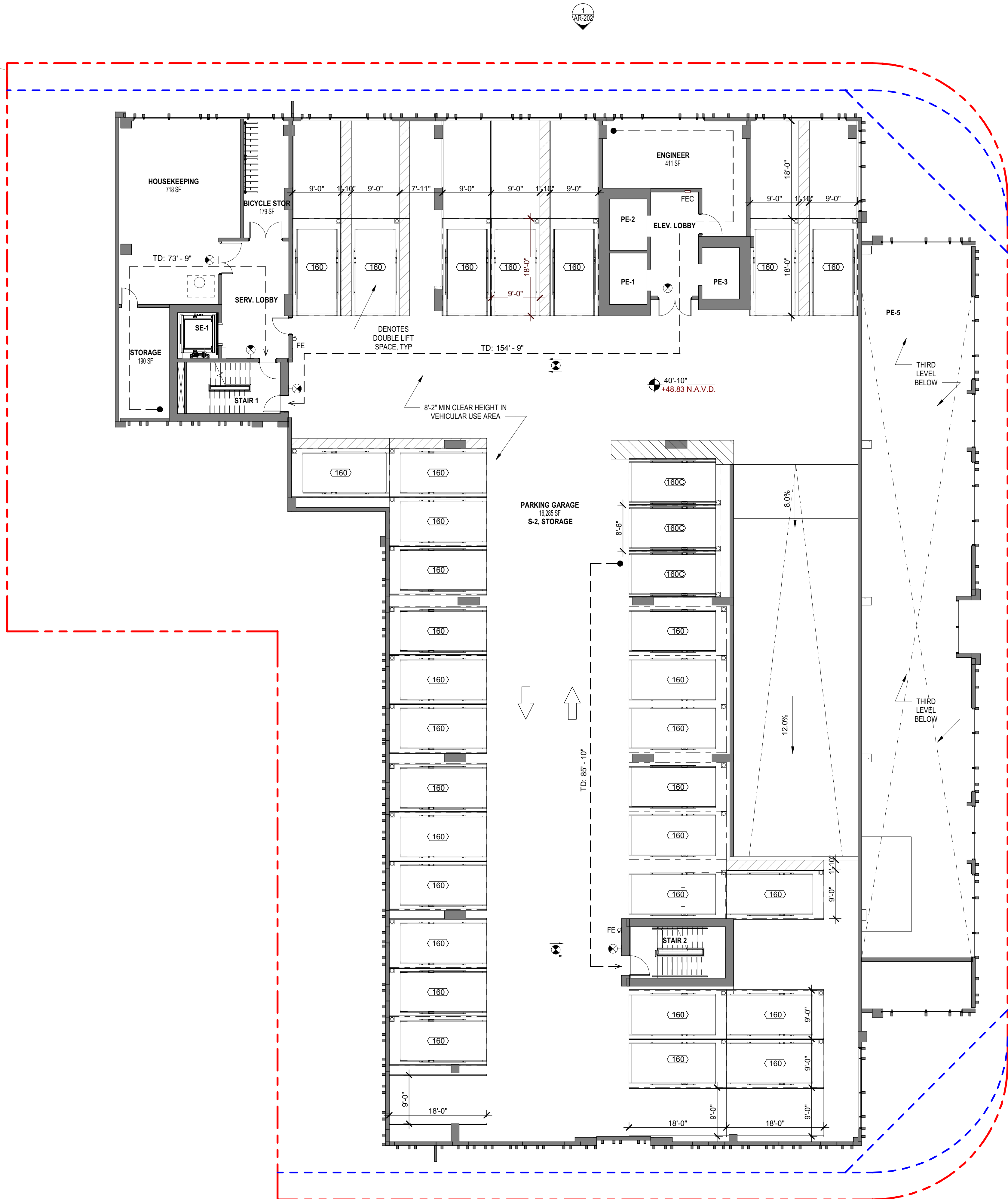
101 S. OCEAN BLVD
POMPAÑO BEACH, FL 33062

Digitally signed
by Jiro Yates
Date:
2024.04.05
10:40:38-04'00'

LEVEL 4

DRC SET

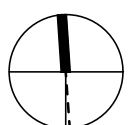
AR-104



AAC

PZ23-12000042

05/07/2024



4/5/2024 9:53:43 AM